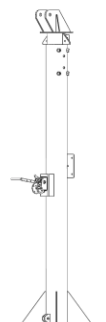




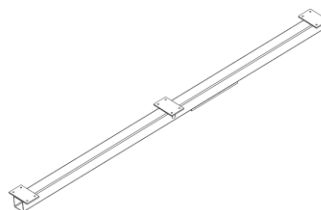
Elios Arbora P8
Pole Mount System for 8 Solar Panels
Installation Manual

Post



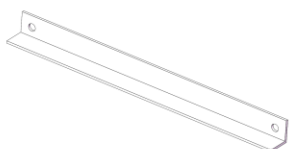
x1

Beam



x1

Support



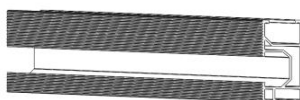
x2

Secondary Beam



x3

Rail-1:2000MM



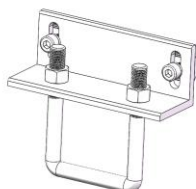
x4

Rail-2:2800MM



x4

L Splice



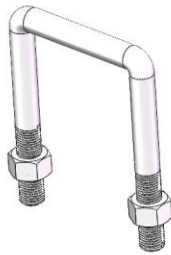
x12

Rail Connector



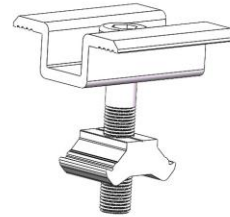
x8

U Bolt



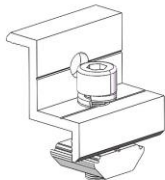
x6

Adjustable Mid Clamp



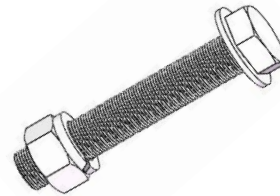
x12

Adjustable End Clamp



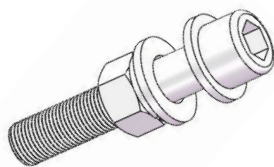
x8

M27*170mm



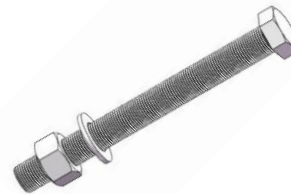
x1

M12*65mm



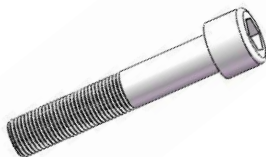
x2

M20*220mm



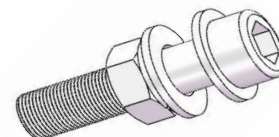
x2

M16*40mm (Safety pin)



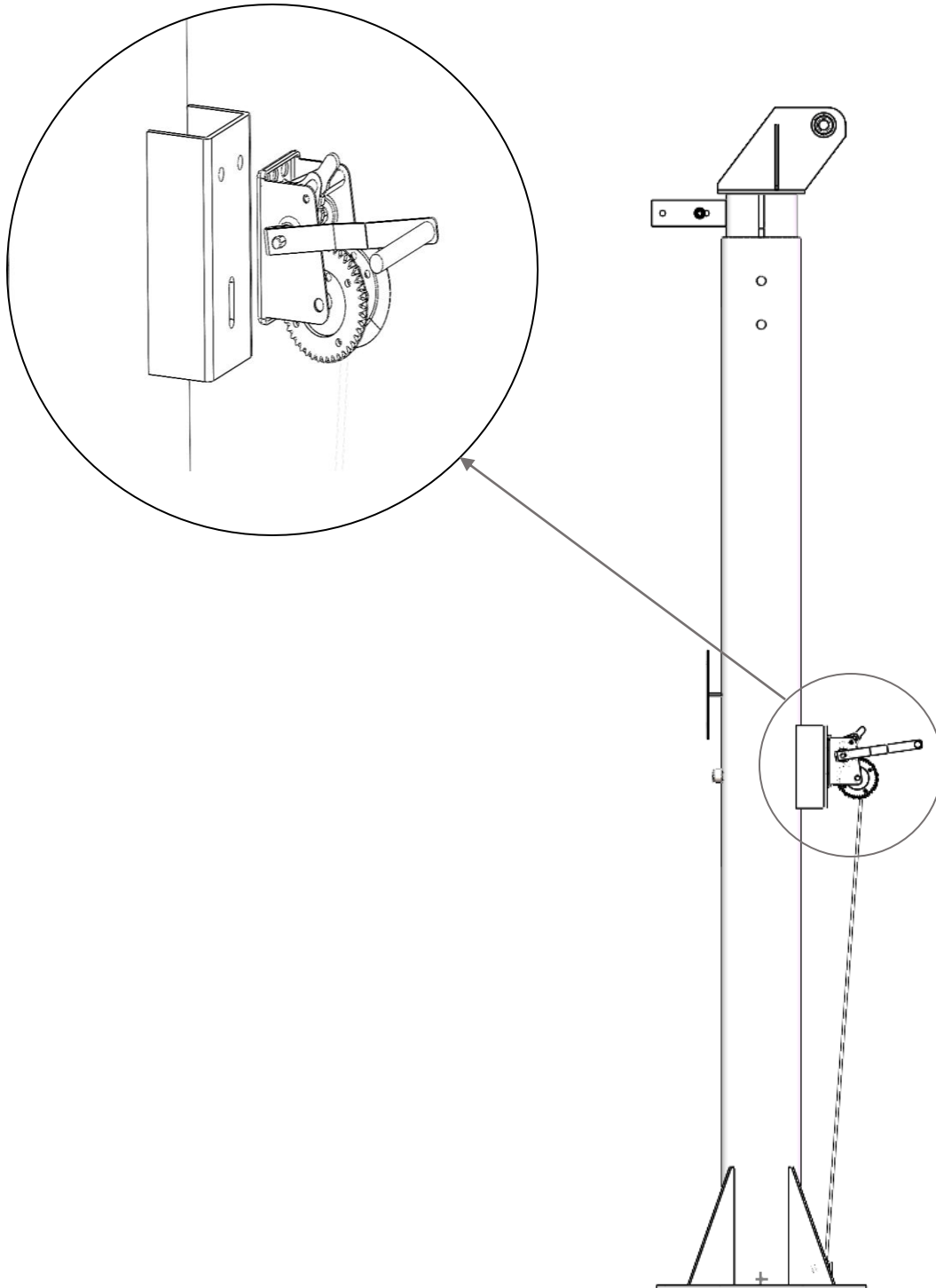
x1

M10*30mm

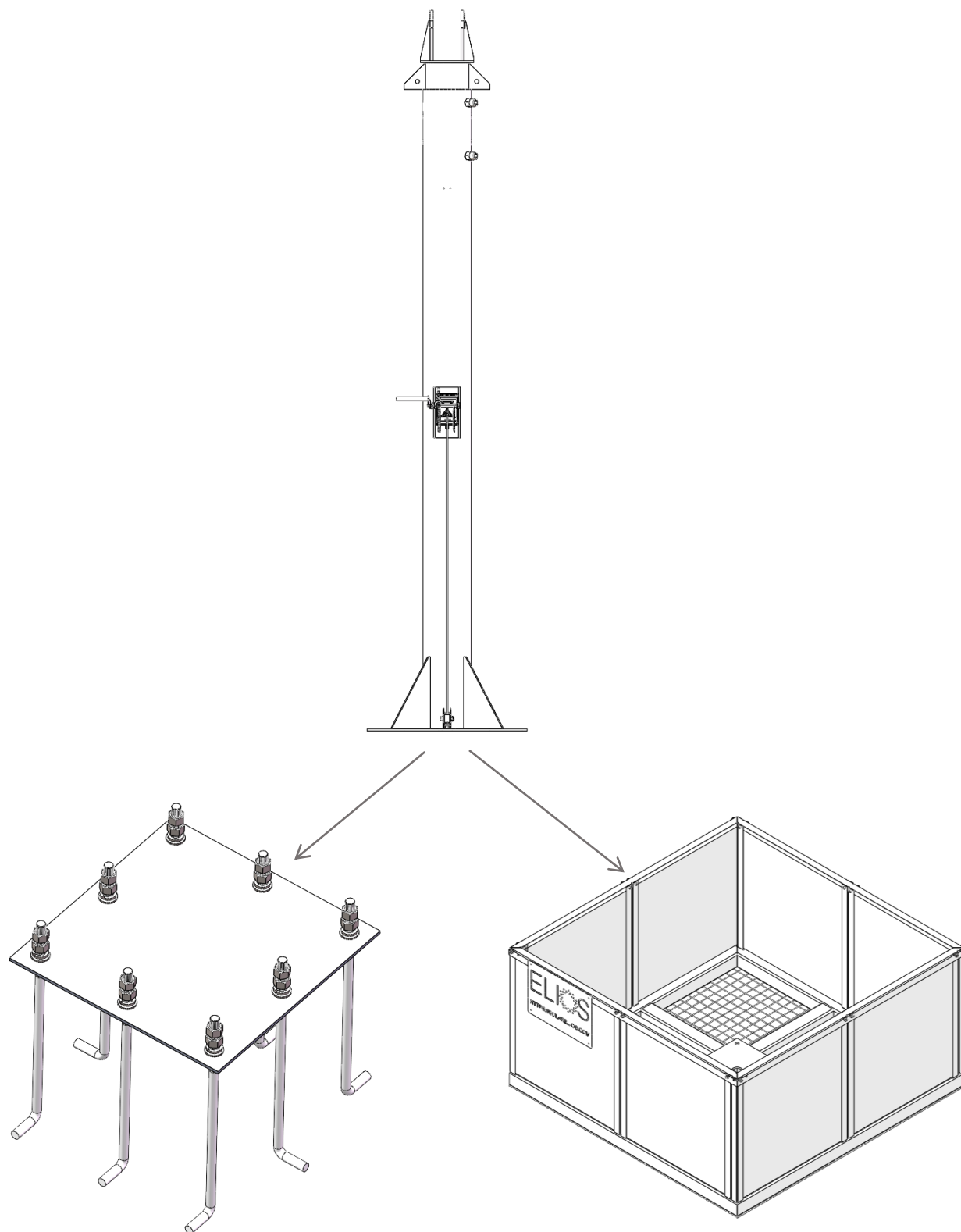


x3

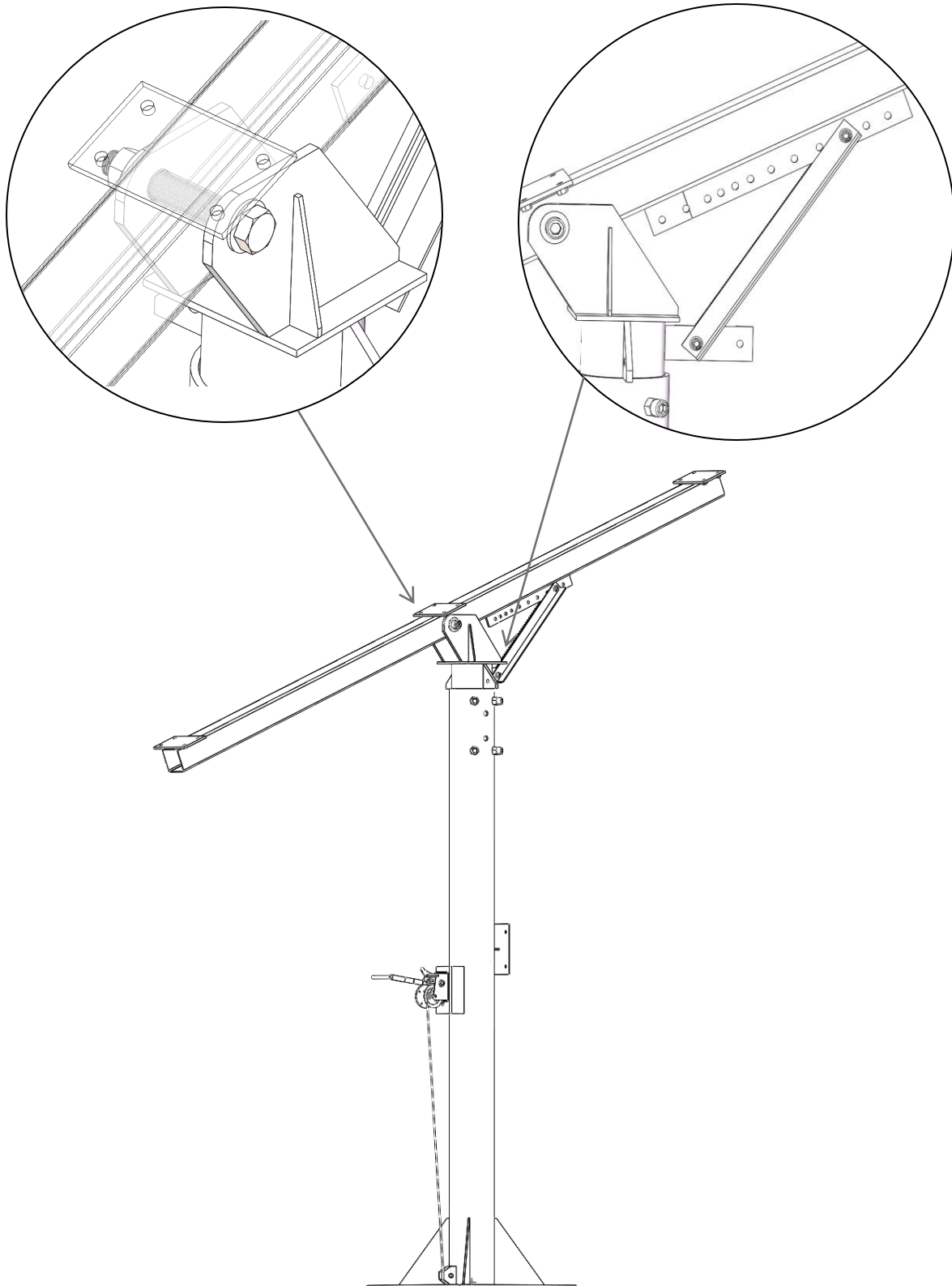
Step1. Secure the hand winch to the post using 3 pieces of M10x30mm bolts.



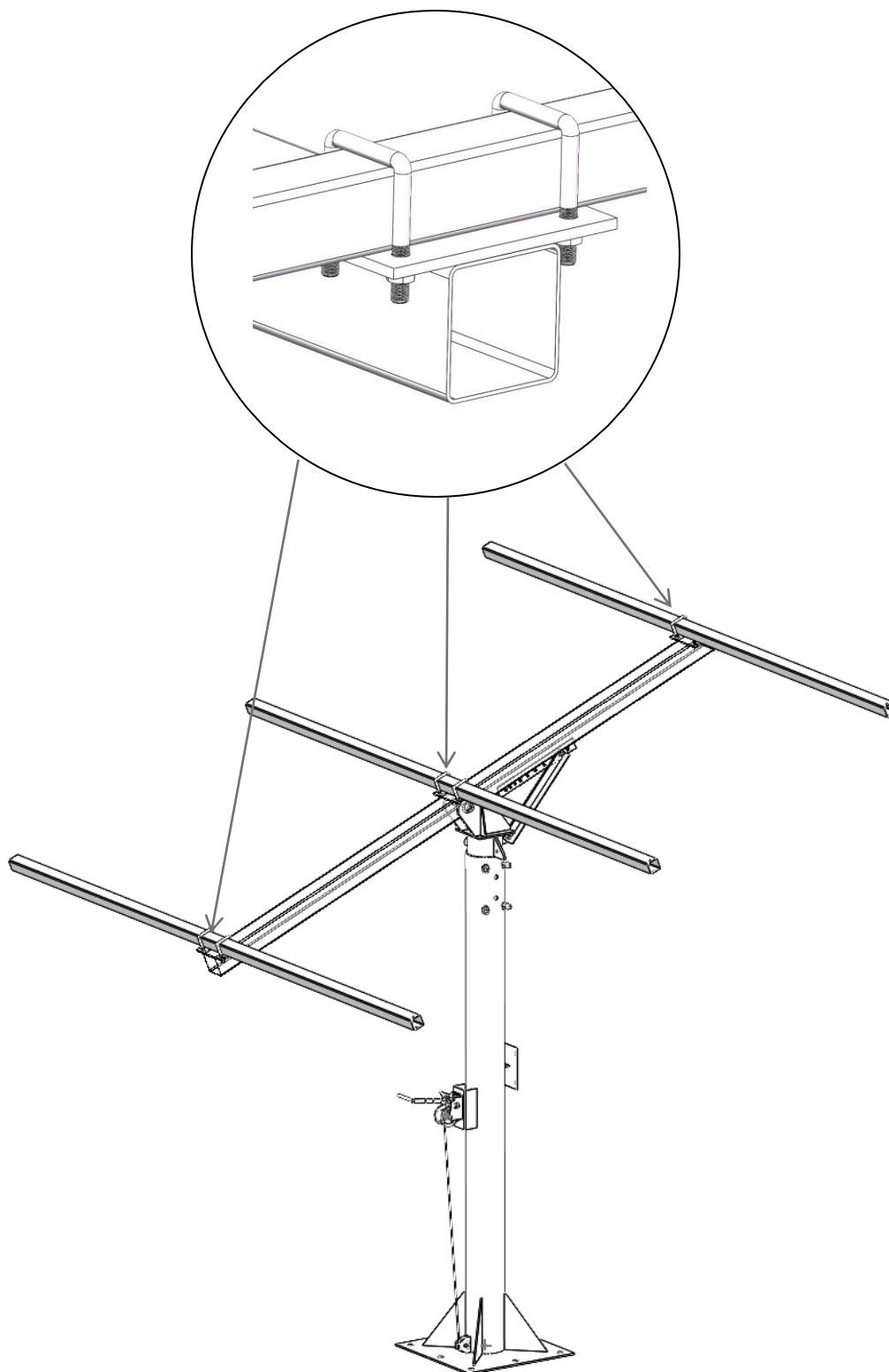
Step2. Install the post to the basket or foundation bolt.



Step3. Secure the main beam to the post using an M27x170mm bolt. And then secure the support to the adjustable angle holes using 2pcs of M12x65mm bolts.

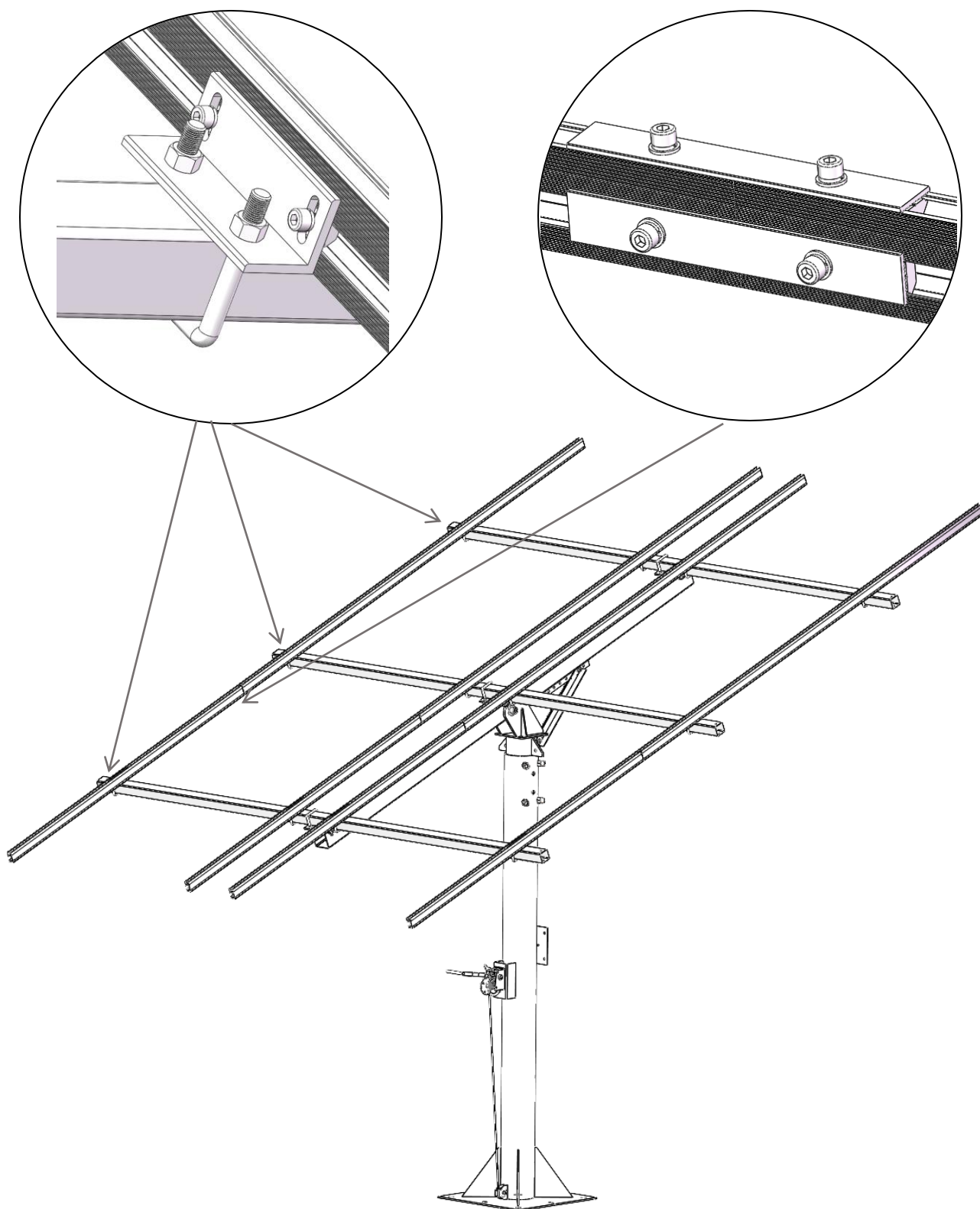


Step4. Secure the secondary beams to the main beams using U bolts.

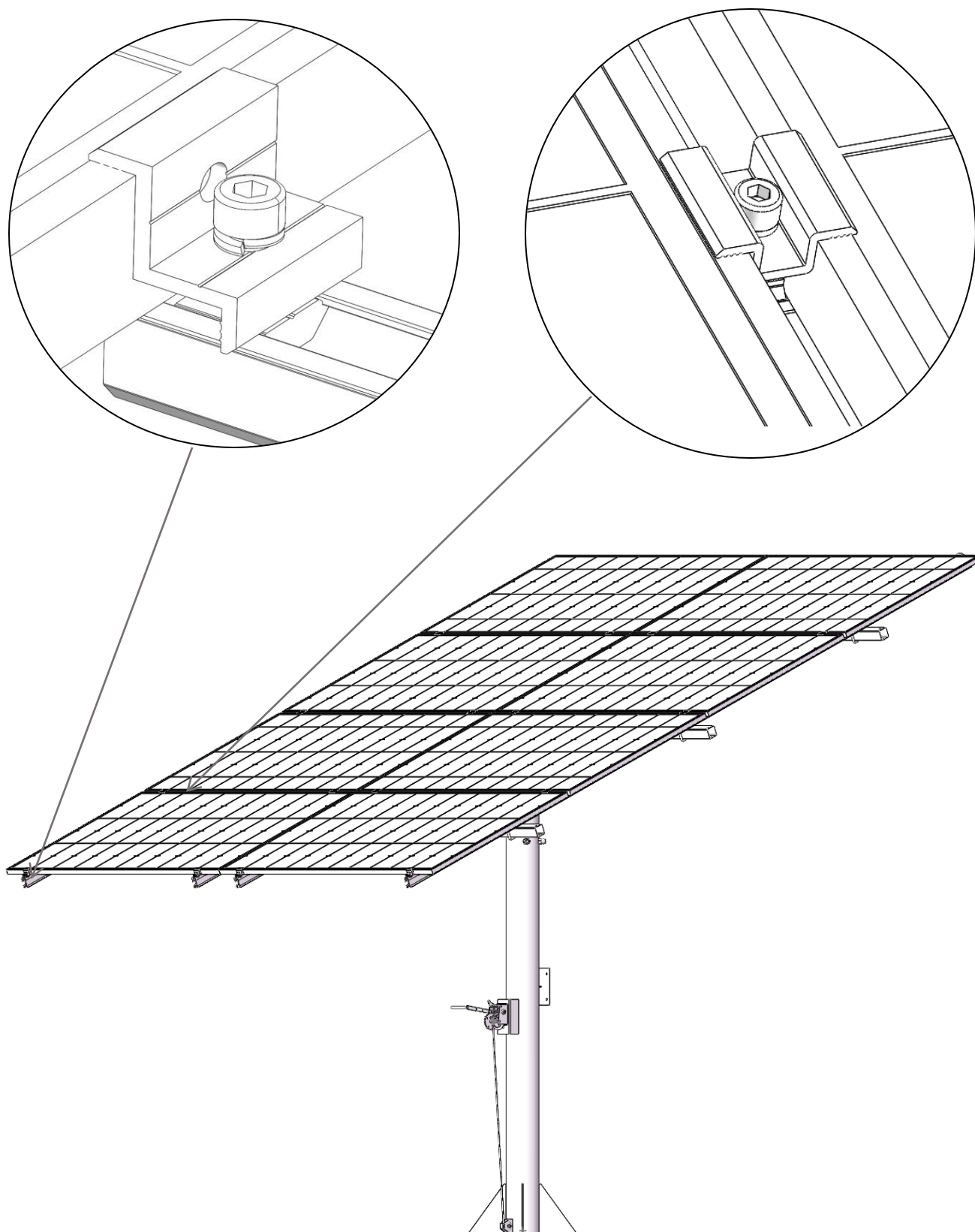


Step5. Connect the rails using rail connectors.

Then, secure the rails to the secondary beam using L bracket.

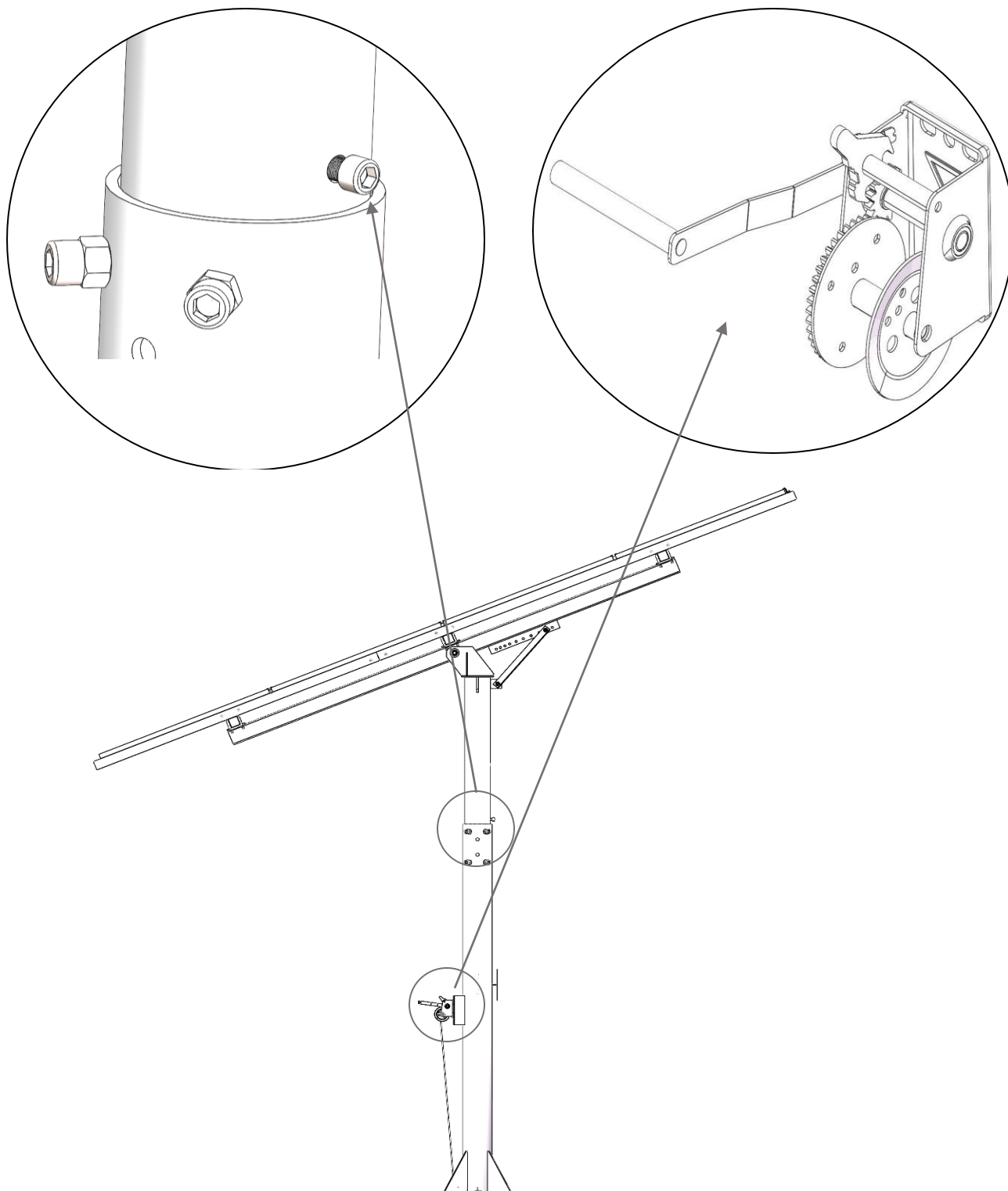


Step 6. Fix the solar panels using mid clamps and end clamps.



Step7. Lift the post using hand winch on the post.

Put the M16x40mm safety pin inside one of the safety holes of top post when lifting it. (By doing so, in the event of a cable rupture, the whole assembly will not drop down quickly and cause potential damage or injury to someone.)



Step8. Lock the hand winch when lifting the post to the suitable height. Fasten the 4pcs of M20x50mm bolts, Then secure the top post and outer post using 2 pcs of M20x220mm bolts.

Pls note: DO NOT lift the post above the safety line.

