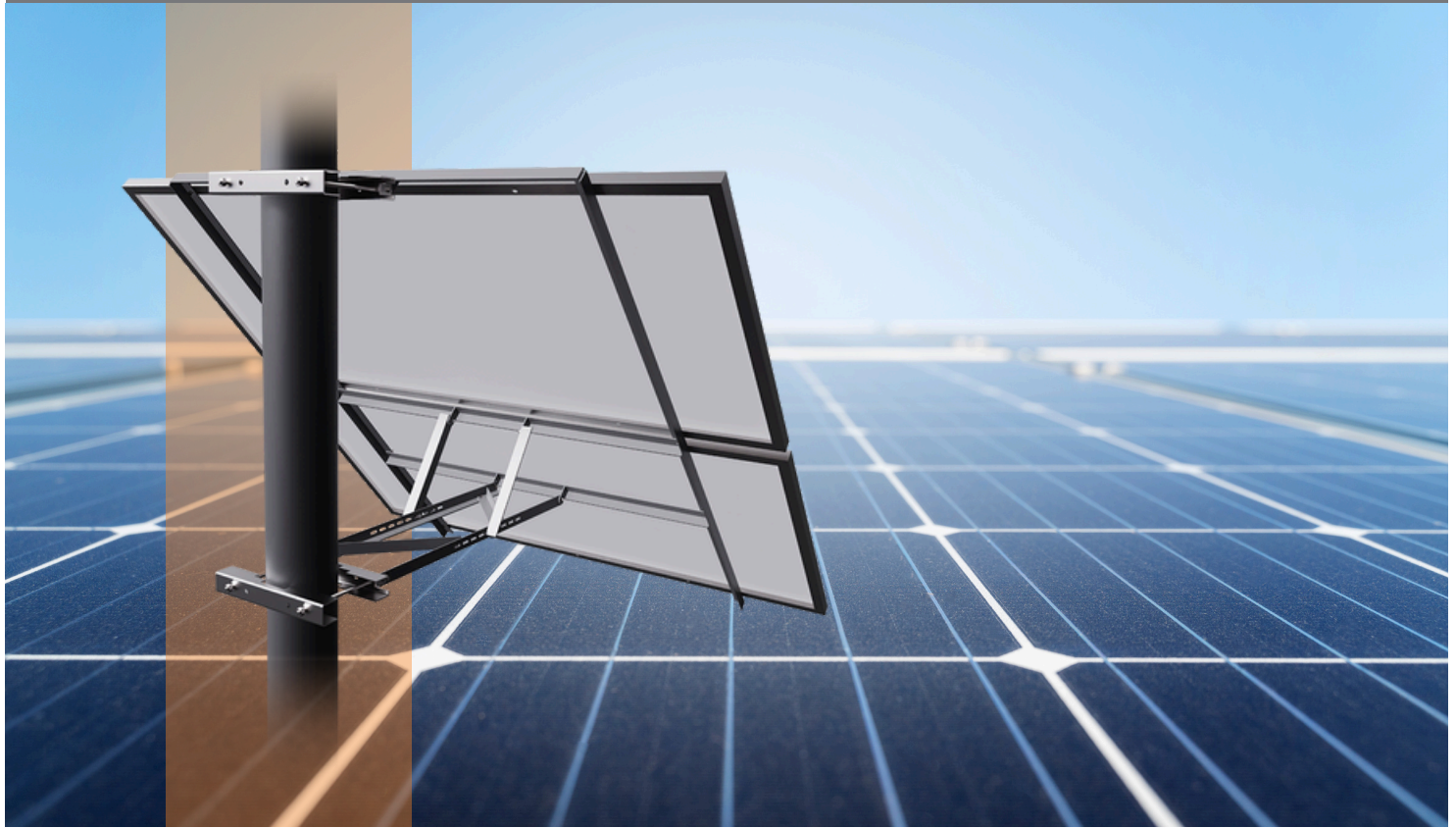


# ELIOS | Koala M2

## Side Post Mounting Bracket System for Two Solar Panel Data Sheet



The Elios Koala M2 is a reliable and efficient solar mounting system designed to install two photovoltaic modules onto an existing pole. Its durable, weather-resistant construction ensures stability and long-term performance, while its simplified design allows for quick and straightforward installation without the need for complex groundwork. Engineered with an optimized tilt configuration, the Koala M2 maximizes sunlight exposure to enhance energy efficiency and overall power generation. Combining strength, precision, and ease of use, it provides a secure, cost-effective solution ideal for off-grid, remote, and personal solar applications.

### Features & Benefits



Compatible with 2 Solar panel of 60 or 72 cells



Built tough to withstand all kinds of weather, ensuring it lasts for years.



Made from galvanized steel for durability and corrosion resistance.



Suitable for poles from 110mm to 220mm (4.33" to 8.66") in diameter.



Stainless steel installation hardware.

# ELIOS | Koala M2

## Side Post Mounting Bracket System for Two Solar Panel

### Data Sheet

#### SPECIFICATIONS

Install Site	Open terrain
Module Type	Framed
Module Orientation	Landscape
Size of Module array	2 panels of 60 or 72 cells
Tilt Angle	50°~70°
Max Wind Speed	36m/s
Snow Load	1.4kn/m2
Material	Stainless steel, and galvanized steel

#### PACKAGING INFORMATION

Retail Box Dimensions (LxWxD) & Weight	Two cartons: 1. 410 x 190 x 90mm (16 x 7.5 x 3.5in), 8.9kg (19.6lbs) 2. 2265 x 230 x 65mm (89 x 9 x 2.5in), 29.5kg (65lbs)
Total Weight	38.4kg (84.65) /set

#### Applications

- Off-Grid
- Rural Areas
- Telecommunication
- Lighting System
- Surveillance System
- Agricultural

#### Warranty

- 5 years limited warranty.

#### Dimensions

